

fitlock



***Innovative
Horizontal and Vertical
Fixing System***

MASCHERPA

FITLOCK is a revolutionary patented system that not only allows a simple and very effective way to fix walls and covering panels to the frame, but also allows precision adjustment of the position of one part in relation to another during fitting or after its repositioning due to additional finishing operations.



The system has been developed after many years of experience in the nautical market where it is a must for the positioning of ceiling and side panels and is largely used in the railway, automotive, motor home, exhibitions, internal furniture contractors for hotels, bar and building markets.

Innovative FITLOCK substitute the old fixing methods like: nails, adhesives, screws, that securely hold the part, but making it difficult to remove the part once assembled.



Practical FITLOCK once mounted, allows the fitter to adapt the position of the part, thanks to an allowed displacement of 4 mm. in all directions without losing its capacity and reliability



Easy to use FITLOCK is very easy to remove and to position it to allows completion of multiple operations. Any fabric or leather covering or lacquer painting made on the panels will not affect the panels positioning and alignment precision.

Safe FITLOCK models, have an holding force that varies from 7 Kg. to 22 Kg. depending on the model and its holding power has been demonstrated on boats travelling at 55 knots.



Technical Characteristics

The Fitlock fixing systems are supplied, as standards, in two types of materials. Acetalic, in white colour, for all the flanges of the male and for all the female components and the fastening "flower" of the male, in acetalic, white colour for the models with higher holding capacity and in nylon, grey colour for the lower capacity. For gluing requirements or insertion in the resin stratification are available models made completely in nylon.

Fitlock

Diameter 60 mm

Modell

Holding capacity

Hard	Acetalico (white "flower")	22 Kg
Soft	(grey "flower")	11 Kg.

Mini Fitlock

Diameter 40 mm

Hard	Acetalico (white "flower")	11 Kg.
Soft	(grey "flower")	7 Kg.

Accessories

A complete set of accessories for the assembly of the Fitlock are available like spacer rings, spacers, bayonet fittings or adhesives, amongst which it is possible to select the most effective method for your assembly requirements.



Special Models

Mini Fitlock Back Mounting



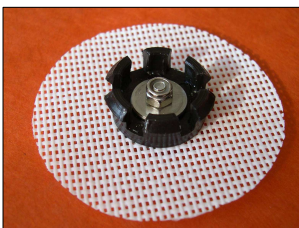
The Female Back Mounting Unit that will allow you to fix panels by having a support that is mounted on the back of a frame or to another panel. This units can be used with any of the Male Mini Fitlock to suit your specific application and requirements.

Mini Fitlock Side Mounting

The Female Side Mounting Unit that will allow you to fix panels by having a support that is mounted on a side frame. This units can be used with any of the Male Mini Fitlock to suit your specific application and requirements.



Mini Fitlock Net Mounting



These models have been requested by our customers for fixing the cushions on the deck and inside the boat. These units could also be used for the same purpose with outdoor furniture. The unit can be glued, sewed and can be supplied with different type of nets or supports. The units are available in Hard and Soft models.

Mini Fitlock Base Mounting



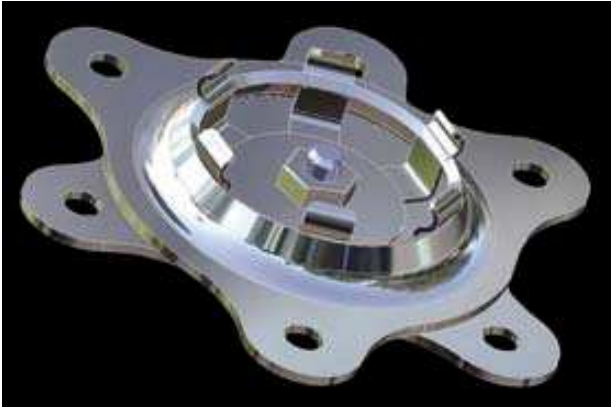
These units have been designed for use where space is a problem. The male unit is composed by the holding "flower" and a screw that will allow the male to be fixed to the panels or a support always allowing the 4 mm. 360° adjustment. The female, named "Shot", is a cylindrical component that is press fitted in a 30 mm. +0,1 +0,3 diameter hole.



The "Shot" female can be used with all the other Mini Fitlock male components.

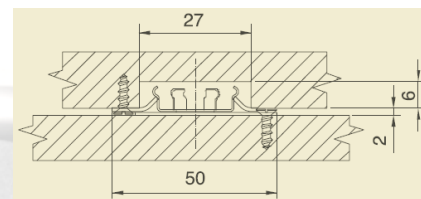
INOX Series

The Mini Fitlock Inox series have been designed for all those applications where is required the use of materials with Class "0" flammability.



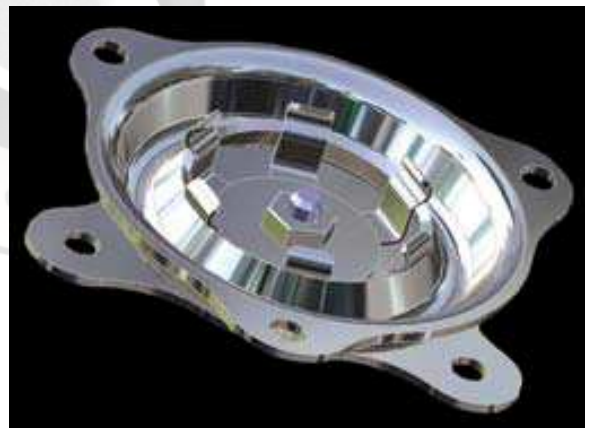
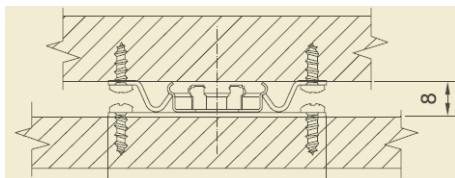
Mini Fitlock Inox

They have an external diameter of 50 mm and a standard holding capacity of 7 kg. But it can be increased up to more than 30 kg. This model is mounted by making a 27 mm. hole 6 mm. deep to seat the female component. This solution allows to leave only a 2 mm. distance between the two panels to be fixed.



Mini Fitlock Inox Free

The model Inox Free has the same characteristics of the Inox one but is different from the above mentioned model because you do not have to make any holes for the seating of the female component. The male and the female are fixed on the panel and on its support leaving a space of 8 mm. between the two parts to be fixed



Both models are also available, at a reduced cost, in the version with the "flower" in stainless steel but with the flange and the female component in zinc plated stamped steel.

For the standard models, are available, upon request and in relation to the quantity, other materials and colors.

The information provided in this document are given in good faith and E. Mascherpa S.p.A. is convinced that it is accurate. However, since the method and the use of the products by our customers are beyond our control, this information must not be used to substitute tests performed by the customers themselves, in order to ascertain that the product we supplied are suitable, effective and reliable in respect to their foreseen use. The information here with contained must not be considered, for any reason at all, as a clear or implied guarantee of suitability for a specific scope. E. Mascherpa S.p.A. decline any responsibility for accidental or consequential damages.

EMANUELE MASCHERPA S.p.A.

20127 MILANO – VIA NATALE BATTAGLIA 39
TEL. (+39) 02 28003.1 FAX (+39) 02 2829945
E-MAIL: postmaster@mascherpa.it
Internet : www.mascherpa.it

MASCHERPA

da oltre 100 anni forniamo soluzioni